

OLYMPIAD DRILL TEST 1

GRADE II

All questions are MCQ based. Each subject consists of 10 questions with each of 1-1 mark.

English

1. Identify the common noun in the given sentence:

‘We arrived early at the station.’

- a. We
- b. arrived
- c. early
- d. station

2. Read the sentence and select the proper noun:

‘France is famous for perfumes.’

- a. France
- b. famous
- c. for
- d. perfumes

3. How many vowels are there in the word ‘Aeroplane’?

- a. 3
- b. 4
- c. 5
- d. 6

4. Fill in the blank with the correct pronoun.

My grandfather is sick. I am going to see _____.

- a. she

- b. him
- c. her
- d. his

5. My puppy is very cute. _____ coat is brown in colour.

- a. His
- b. Her
- c. Their
- d. Its

6. Which of the following is correct?

- a. She is reading a book.
- b. They is learning a lesson.
- c. I am read a book.
- d. None of these

7. Tick the correct verb for the given blank.

This is the teacher who also _____my father, when he was young.

- a. taught
- b. teach
- c. thought
- d. teaches

8. Fill in the blank with the correct articles.

'I saw _____ eagle on _____ roof top.'

- a. a/an
- b. an/the
- c. the/the
- d. a/the

9. Complete the following sentence choosing the appropriate articles.

_____Sun rises in _____ east.

- a. The, the
- b. The, a

- c. An, a
- d. A, the

10. Fill in the blank with the correct preposition.

My wife's birthday is ___ the month of April.

- a. on
- b. at
- c. in
- d. of

EVS

1. Which of the following is true about non-living things?

- a. Non-living things have the ability to think.
- b. Non-living things eat tasty food.
- c. Non-living things drink water to survive.
- d. None of these

2. The object in the given picture is a living thing because it _____.



- a. grows
- b. can make more plants of the same kind
- c. breathes
- d. all of these

3. The items shown in the box are_____.



- a. energy giving food
- b. body building food
- c. protective food
- d. all of these

4. Which of the following is a plant product but we cannot eat it?

- a. orange
- b. rubber
- c. cabbage
- d. chilly

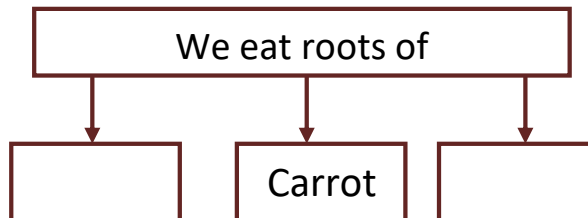
5. Plants release _____ as their waste.

- a. sunlight
- b. oxygen
- c. carbon dioxide
- d. None of these

6. Natural fibers are obtained from:

- a. cotton plant
- b. jute plant
- c. sheep
- d. All the above

7. Select the correct option to fill the empty boxes of the given flow chart:-



- a. Tomato and Onion
- b. Sugarcane and Ginger

- c. Turnip and Spinach
- d. Sweet Potato and Turnip

8. Which of the following type of clothes generally need dry cleaning?

- a. cotton
- b. raincoat
- c. silk and woolen
- d. None of these

9. Sheena's grandmother is making sweater from a wool yarn. What is this method called?

- a. Weaving
- b. Spinning
- c. Knitting
- d. Spindling

10. What does a plant need for its healthy growth?

- a. a glass of water
- b. the right amount of water
- c. plenty of water
- d. none of the above

Maths

1. What is the place of the second digit from the right of a number?

- a. Tens
- b. Unit
- c. Hundreds
- d. All the above

2. 200 more than 750 is same as:

- a. 950

- b. 850
- c. 800
- d. None of these

3. The time shown in the clock is:

- a. 35 minutes past 3
- b. 10 minutes past 2
- c. 30 minutes past 3
- d. 15 minutes past 3



4. Select the correct option.

- a. $5 + 3 = 2 + 2 + 2$
- b. $15 + 5 = 30 - 15$
- c. $5 + 5 + 5 + 5 = 30 - 20$
- d. $22 - 7 = 20 - 5$

5. 2 thousands 7 hundreds 3 tens 8 ones - 1 thousand 4 hundreds 1 ten 3 ones

= _____

- a. 1225
- b. 4325
- c. 3325
- d. 1325

6. Which of the following numbers is the second largest in the group?

{595, 600, 795, 825, 150}

- a. 595
- b. 600
- c. 825
- d. 795

7. Which of the following represents 3 minutes?

- a. 60 seconds + 60 seconds
- b. 60 seconds + 60 seconds + 60 seconds
- c. 60 seconds + 30 seconds
- d. 30 seconds + 30 seconds

8. Rohan started his football practice from 2nd December 2016. If he practiced only on even number of days, then how many days did he practice in December 2016?

December, 2016						
S	M	T	W	T	F	S
				1	2	3
4	5	6	7	8	9	10
11	12	13	14	15	16	17
18	19	20	21	22	23	24
25	26	27	28	29	30	31

(Assume every Sunday is a holiday.)

- a. 12
- b. 13

- c. 15
- d. 10

9. Which number can replace the question mark to make the sentence true?

'40 - ? = 24'

- a. 38
- b. 24
- c. 19
- d. 16

10. 4 hundreds 3 tens 5 ones + 2 hundreds 2 tens 6 ones = _____

- a. 616
- b. 636
- c. 661
- d. 669

G.K.

1. Anita Kaul designs buildings that will be built. She is a /an _____.

- a. architect
- b. conductor
- c. mechanic
- d. pilot

2. 5th September is the birthday of our second president Dr. Sarvepalli Radhakrishnan. This day is celebrated as _____.

- a. Children's Day
- b. Teachers' Day
- c. Independence Day

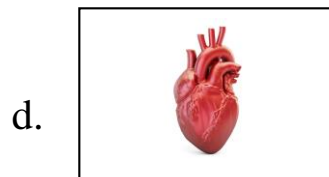
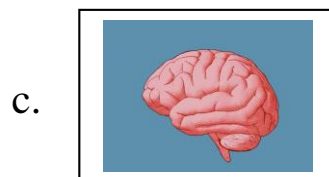
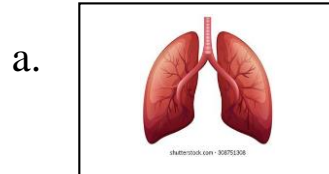
d. Republic Day

3. Which part of the plant is brinjal?

- a. stem
- b. root
- c. fruit
- d. flower



4. I am an organ present in the chest that pumps blood to all parts of the body. What am I called?



5. We should not _____ our food.

- a. cook
- b. eat
- c. overcook

d. None of these

6. The Charminar is a famous monument of which Indian city?

- a. Hyderabad
- b. Mumbai
- c. Bengaluru
- d. New Delhi

7. We all love to eat pizza. It is a traditional dish of which country?

- a. Greece
- b. France
- c. Italy
- d. Sweden

8. Choose the option which is not correct.

‘Pucca houses are built with _____.’

- a. cement
- b. bricks
- c. steel
- d. mud

9. Which of the following do we get from plants?

- a. Rayon
- b. Nylon
- c. Silk
- d. Cotton

10. Identify the given picture.

- a. Burj Khalifa
- b. Leaning Tower of Pisa
- c. Eiffel Tower
- d. Tokyo Sky Tree



